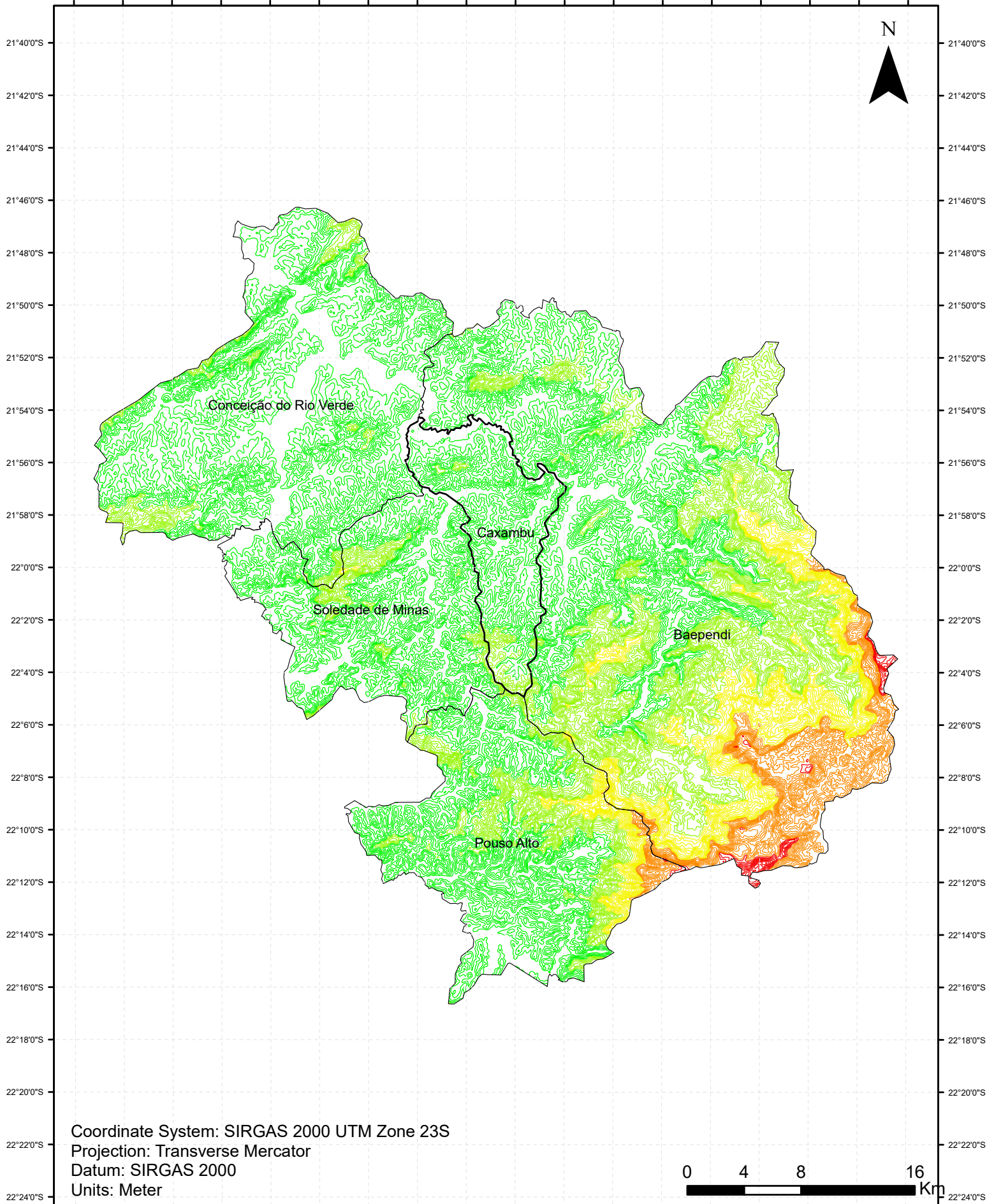


45°14'0"W 45°12'0"W 45°10'0"W 45°8'0"W 45°6'0"W 45°4'0"W 45°2'0"W 45°0'0"W 44°58'0"W 44°56'0"W 44°54'0"W 44°52'0"W 44°50'0"W 44°48'0"W 44°46'0"W 44°44'0"W 44°42'0"W 44°40'0"W



Legenda

- Curvas de nível 30m - Região**
- 1291 - 1620 m
- 1951 - 2370 m
- 1621 - 1950 m
- 1051 - 1290 m
- 870 - 1050 m

Autor: Rodrigo Condé Alves
Eng. Florestal
CREA: 2014132876/RJ